

Canada Goose Management in New York State



Levels of Management

- Federal:
 - Protected by the Migratory Bird Treaty Act
 - Responsible agency – United States Fish and Wildlife Service
- State:
 - Protected migratory game bird

Populations

- Three populations found in New York:
 - Migratory –
 - Atlantic Population (upstate)
 - North Atlantic Population (Long Island)
 - Resident “non-migratory” –
 - Atlantic Flyway Resident Population (statewide)



Canada Goose Population Management Unit



Atlantic Population

Atlantic Flyway Resident Population of Canada Geese



Population Objectives

Atlantic Population

- Atlantic Flyway Management: 225,000 breeding pairs

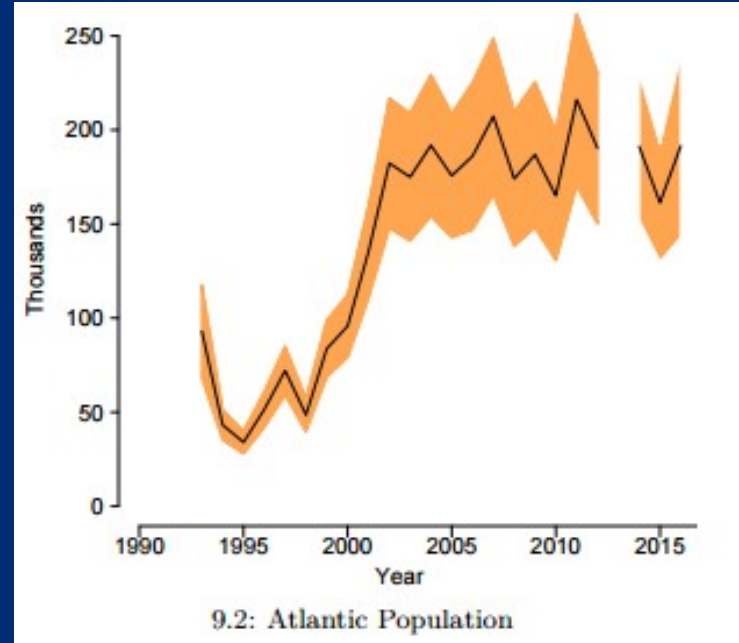
Atlantic Flyway Resident Population

- Atlantic Flyway: 700,000 total birds (spring), by 2020
 - 1.4 geese per square mile
- New York: 85,000 total birds (spring)
 - 1.8 geese per square mile



Where are we now?

- **Atlantic Population:**
 - A true success story in wildlife management
 - Atlantic Population breeding pairs bottomed out at just 29,000 birds in 1995
 - 2016 estimate: 190,000 pairs



Where are we now?

- **Atlantic Flyway Resident Population:**
 - Too much of a good thing?
 - Stable population since 2003, no significant trend
 - 2016 estimate: 950,000 total birds

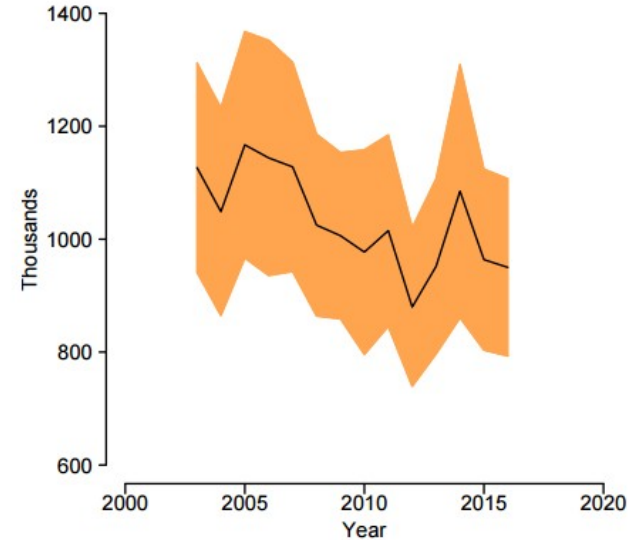
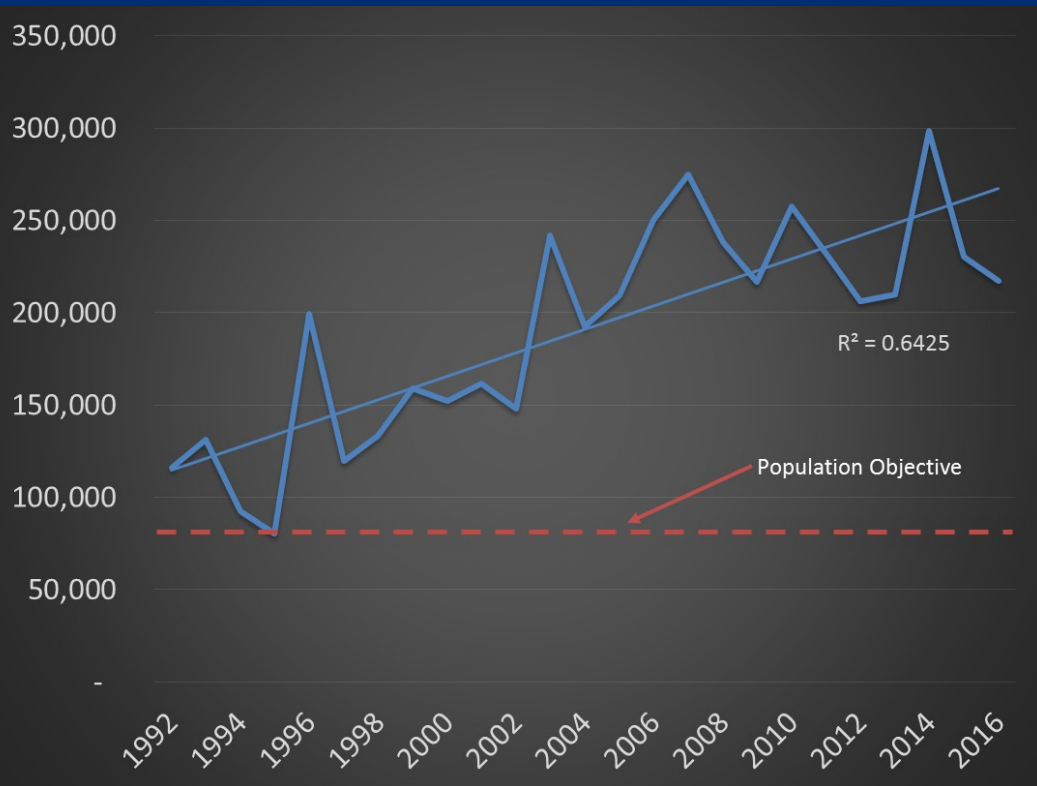


Figure 10. Estimated numbers (and 95% confidence intervals) of Atlantic Flyway Resident Population (breeding adults) Canada geese.

Resident Goose Population Status in New York



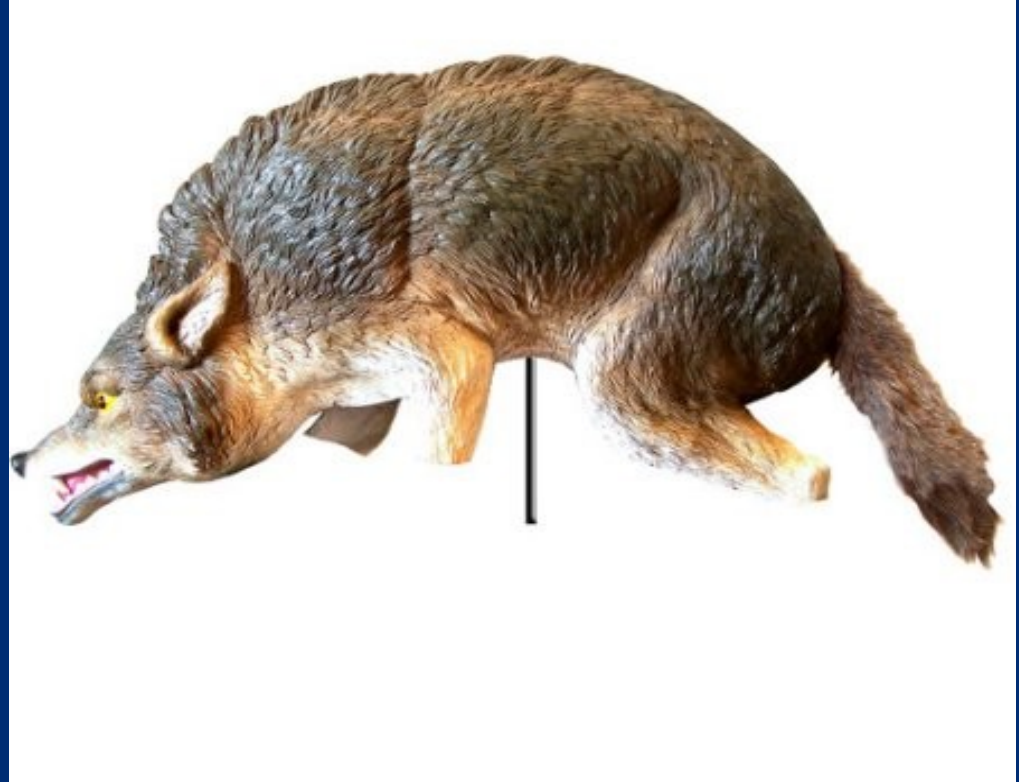
Management options - the toolbox

- Hazing – no permit required
- Egg addling/nest destruction
-registration required (USFWS)
- Regulated hunting
- Federal Depredation Order
– requires “Record of Authorization” from
DEC
- USFWS Depredation Permit



Other non-lethal management tools

- Prohibit feeding
- Habitat modification
- Fencing
- Grid wire
- Visual deterrents
- Chemical deterrents



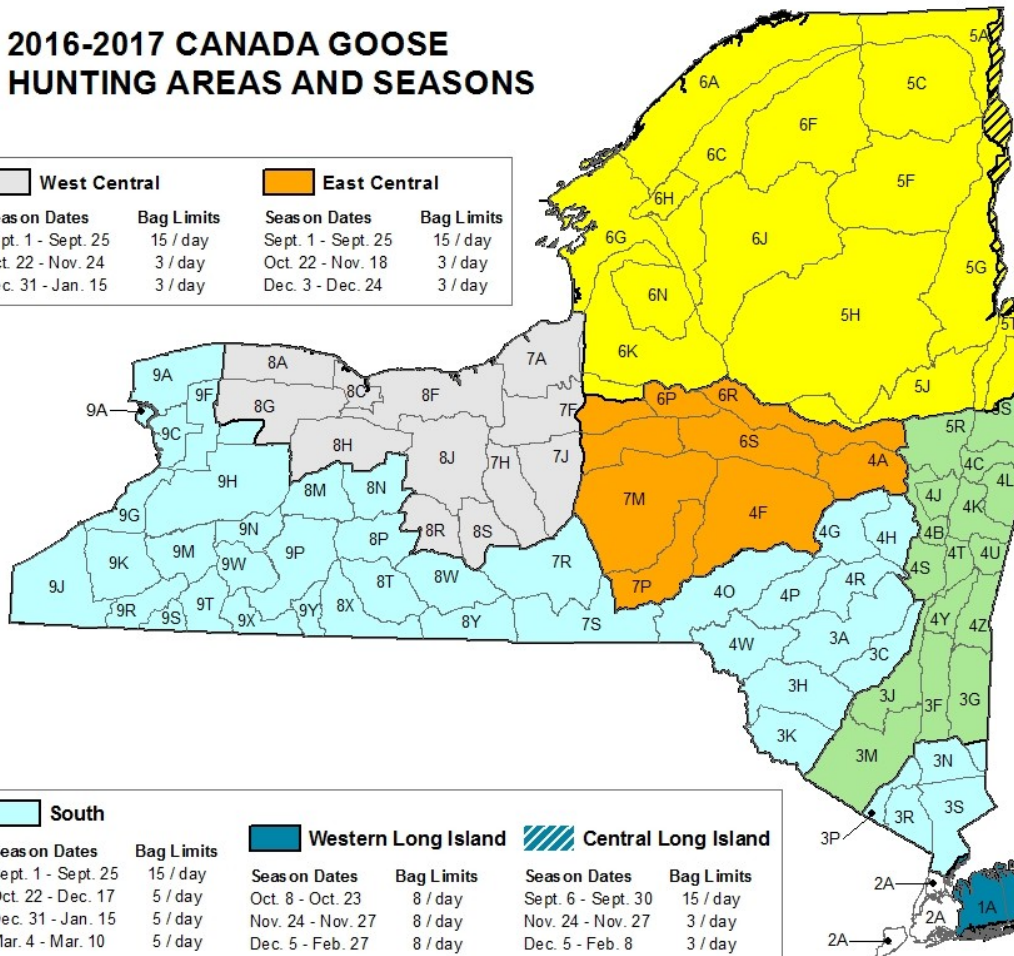
Hunting

- Primary management tool
- Special seasons in some zones:
 - 25-day September season
 - liberal bag limits (8-15/day)
 - special hunting methods allowed
- Regular season
 - Between 30-60 days
 - Restrictive bag limits (2-3/day)
 - Between late October-January



2016-2017 CANADA GOOSE HUNTING AREAS AND SEASONS

West Central		East Central	
Season on Dates	Bag Limits	Season on Dates	Bag Limits
Sept. 1 - Sept. 25	15 / day	Sept. 1 - Sept. 25	15 / day
Oct. 22 - Nov. 24	3 / day	Oct. 22 - Nov. 18	3 / day
Dec. 31 - Jan. 15	3 / day	Dec. 3 - Dec. 24	3 / day



South		Western Long Island		Central Long Island	
Season on Dates	Bag Limits	Season on Dates	Bag Limits	Season on Dates	Bag Limits
Sept. 1 - Sept. 25	15 / day	Oct. 8 - Oct. 23	8 / day	Sept. 6 - Sept. 30	15 / day
Oct. 22 - Dec. 17	5 / day	Nov. 24 - Nov. 27	8 / day	Nov. 24 - Nov. 27	3 / day
Dec. 31 - Jan. 15	5 / day	Dec. 5 - Feb. 27	8 / day	Dec. 5 - Feb. 8	3 / day
Mar. 4 - Mar. 10	5 / day				

Lake Champlain

Season on Dates	Bag Limits
Sept. 1 - Sept. 25	8 / day
Oct. 12 - Nov. 30	3 / day

Northeast

Season on Dates	Bag Limits
Sept. 1 - Sept. 25	15 / day
Oct. 22 - Nov. 14	3 / day
Nov. 16 - Dec. 11	3 / day

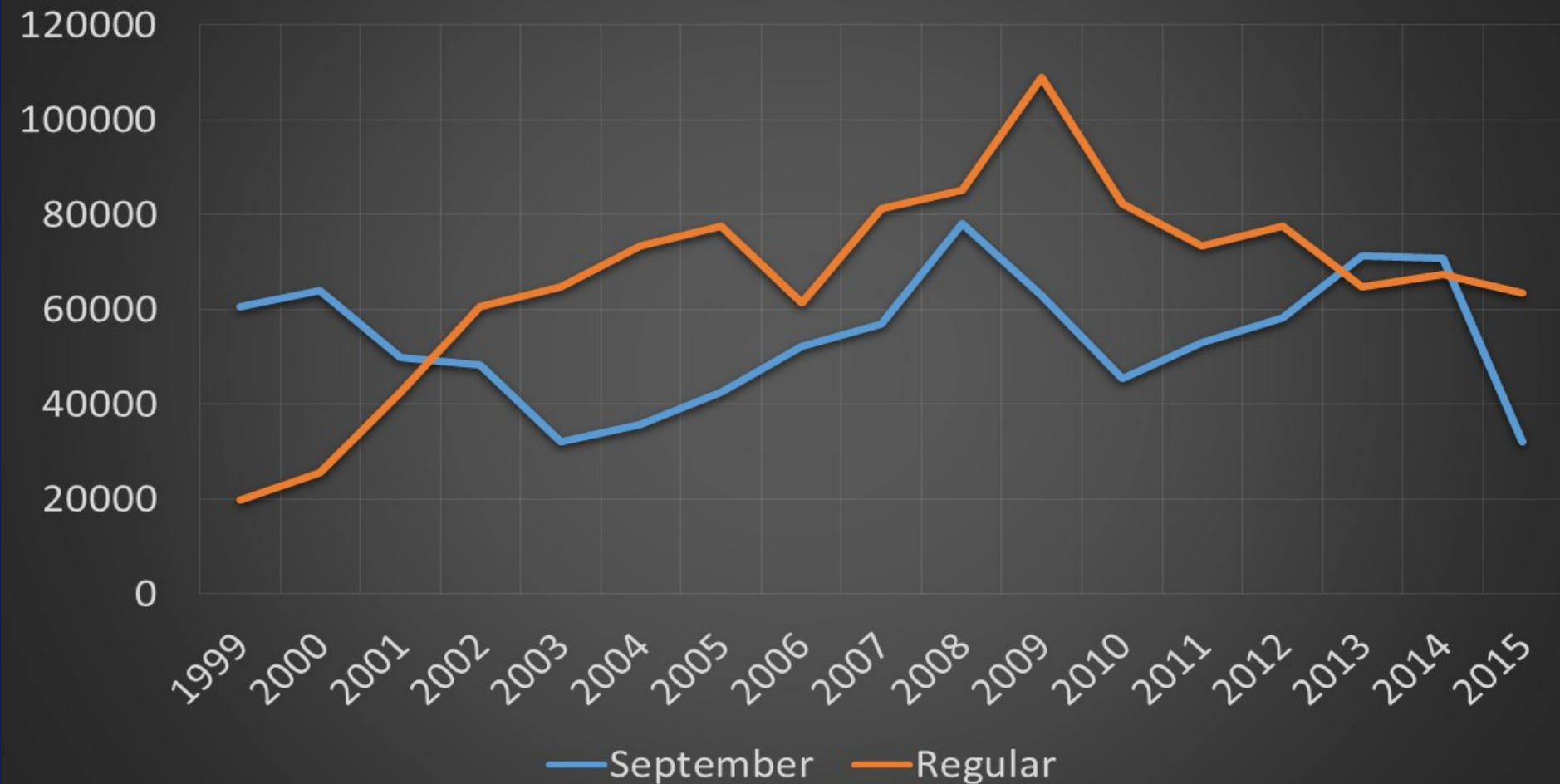
Hudson Valley

Season on Dates	Bag Limits
Sept. 1 - Sept. 25	15 / day
Nov. 5 - Nov. 17	3 / day
Dec. 3 - Jan. 8	3 / day

Eastern Long Island

Season on Dates	Bag Limits
Sept. 6 - Sept. 30	15 / day
Nov. 24 - Feb. 1	3 / day

New York Canada Goose Harvest

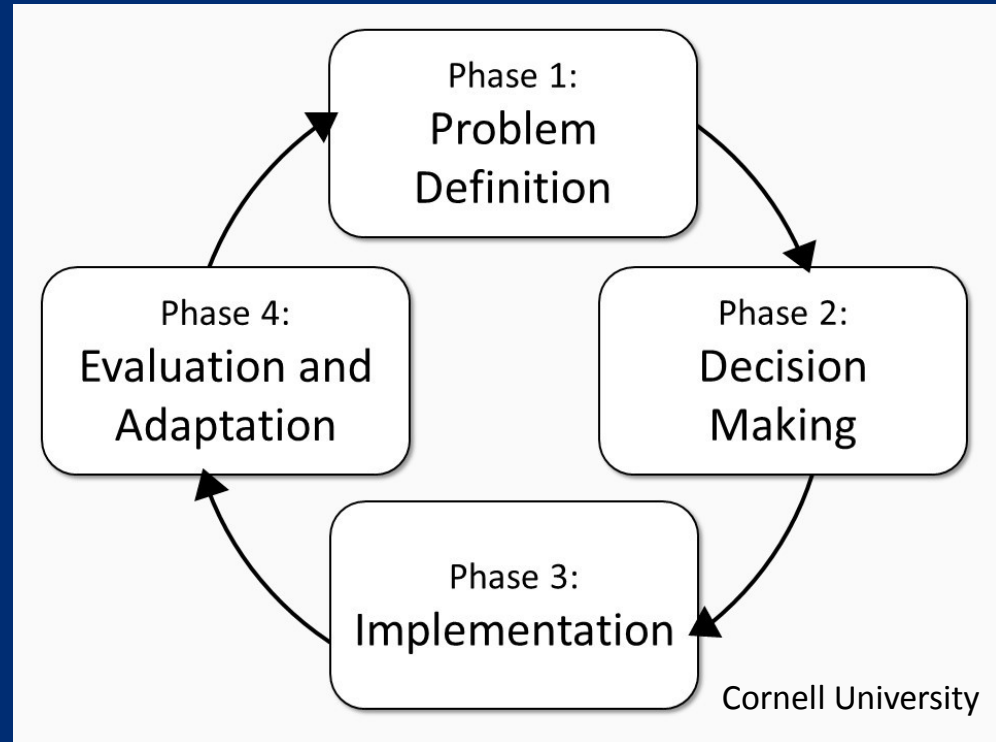


Management begins with the landowner!

- The landowner is the one experiencing the damage
- Management tools are available to address the localized, short-term, impacts
- But what about long-term?

Community-based nuisance wildlife management

- Necessary for long-term success



Questions?



Thank You

- Joshua Stiller
- Migratory Game Bird Biologist
- 625 Broadway, Albany NY
- Joshua.Stiller@dec.ny.gov
- 518-402-8861

Connect with us:

Facebook: www.facebook.com/NYSDEC

Twitter: twitter.com/NYSDEC

Flickr: www.flickr.com/photos/nysdec

Cooperators:

- Cornell Cooperative Research Unit
- Cornell HDRU



Department of
Environmental
Conservation